

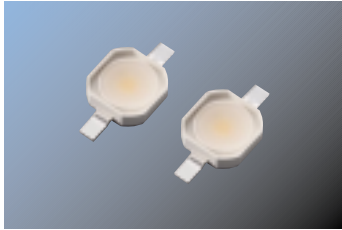
7070 Series

Cool White
No Lens

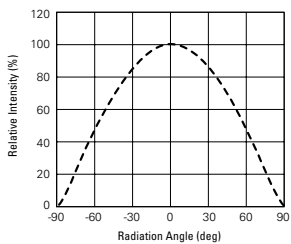
High Power LED
Sunnix5™



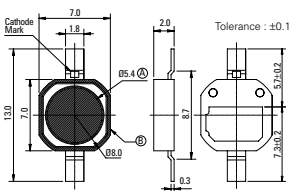
SLHNNWH511N0



Radiation Diagram(115°)

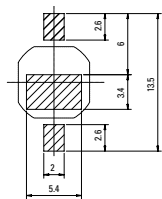
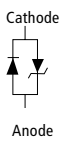


Package Outline

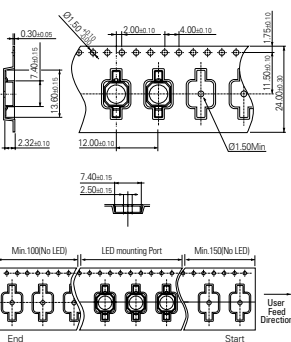


Unit:mm, T_v=25°C

Polarity Recommended Soldering Pattern



Carrier Tape



Absolute Maximum Ratings T_v=25°C

Item	I _F (mA)	T _J (°C)	T _{Stg} (°C)	T _{Std}	T _{Opr}
Value2	350	125	-40 ~ 110	260°C, 10sec	-40 ~ 85

Electrical Characteristics T_v=25°C

Item	Symbol	Condition	Min.	Typ.	Max.	Unit
Forward Voltage	V _F	350mA	3.0	3.5	4.0	V
Reverse Voltage	V _R	10mA	0.5	-	2.0	

※ Tolerance : V_F ±0.1V

Chromaticity Coordinate T_v=25°C, @350mA

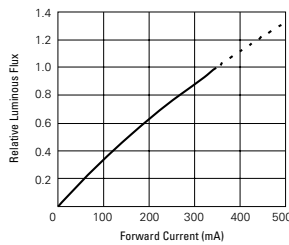
Rank	CCx				CCy				CCT
Q0	0.3128	0.3250	0.3200	0.3011	0.2864	0.2981	0.3600	0.3407	6,000~7,000K
R0	0.3250	0.3428	0.3471	0.3200	0.2981	0.3138	0.3818	0.3600	5,000~6,000K

※ Tolerance: x,y ±0.02

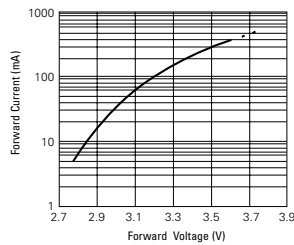
Part Number	Dimension (mm)	Rank	Luminous Flux (lm)			Condition	CRI	Viewing Angle 2θ 1/2(deg)
			Min.	Typ.	Max.			
SLHNNWH511N0	7.0 × 7.0 × 2.0t	H1	70	78	80	350mA	65	115 °
		I1	80	85	90			
		J1	90	-	100			

※ Tolerance ±10%

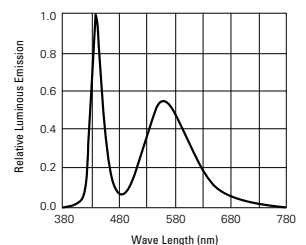
Relative Luminous Flux vs Forward Current



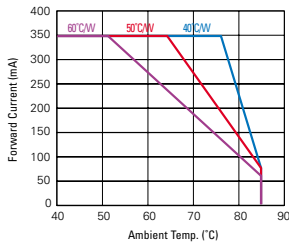
Forward Current vs Forward Voltage



Spectrum Distribution



Derating Curve for 350mA



CIE Coordinate

