

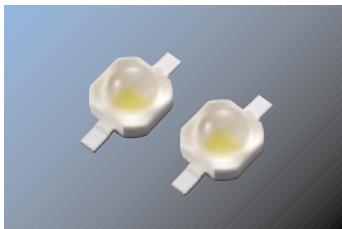
**7070 Series**

Cool White Lens

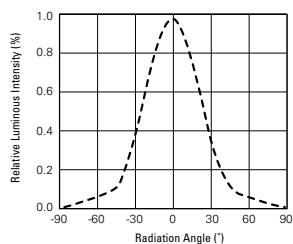
High Power LED Sunnix5™



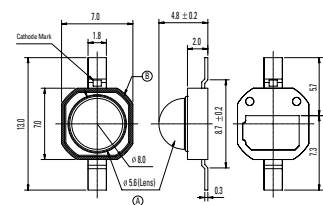
# SLHNNWH511T1



Radiation Diagram(55°)



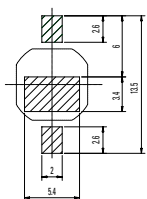
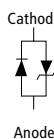
Package Outline



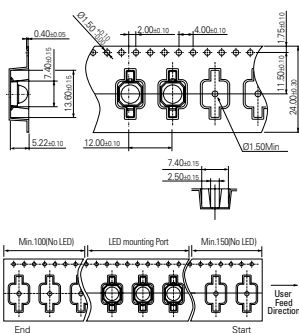
Unit:mm, T<sub>v</sub>=25°C

Polarity

Recommended Soldering Pattern



Carrier Tape



### Absolute Maximum Ratings

T<sub>v</sub>=25°C

Item	I <sub>f</sub> (mA)	T <sub>j</sub> (°C)	T <sub>stg</sub> (°C)	T <sub>std</sub>	T <sub>opr</sub>
Value2	350	125	-40 ~ 110	260°C, 10sec	-40 ~ 85

### Electrical Characteristics

T<sub>v</sub>=25°C

Item	Symbol	Condition	Min.	Typ.	Max.	Unit
Forward Voltage	V <sub>f</sub>	350mA	3.0	3.5	4.0	V
Reverse Voltage	V <sub>r</sub>	10mA	0.5	-	2.0	

※ Tolerance : V<sub>f</sub> ±0.1V

### Chromaticity Coordinate

T<sub>v</sub>=25°C, @350mA

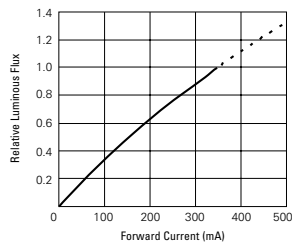
Rank	CCx				CCy				CCT
Q0	0.3128	0.3250	0.3200	0.3011	0.2864	0.2981	0.3600	0.3407	6,000~7,000K
R0	0.3250	0.3428	0.3471	0.3200	0.2981	0.3138	0.3818	0.3600	5,000~6,000K

※ Tolerance: x,y ±0.02

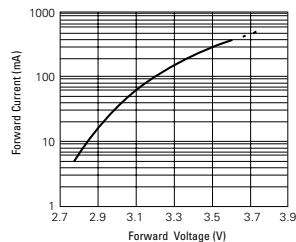
Part Number	Dimension (mm)	Rank	Luminous Flux (lm)			Condition	CRI	Viewing Angle 2θ1/2(degree)
			Min.	Typ.	Max.			
SLHNNWH511T1	7.0×7.0×4.8t	H1	70	78	80	350mA	75	55°
		I1	80	85	90			
		J1	90	-	100			

※ Tolerance ±10%

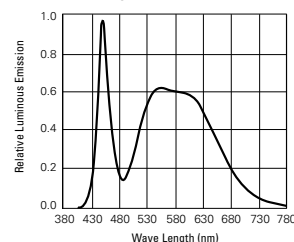
Relative Luminous Flux vs Forward Current



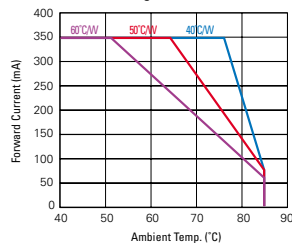
Forward Current vs Forward Voltage



Spectrum Distribution



Derating Curve for 350mA



CIE Coordinate

