

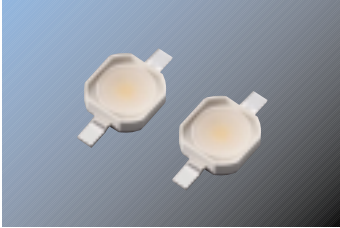
7070 Series

Warm White
No Lens

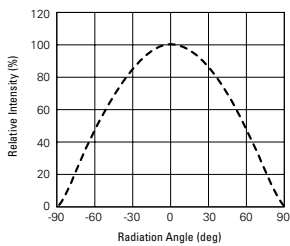
High Power LED
Sunnix5™



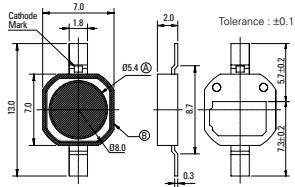
SLHNNWW511N1



Radiation Diagram(115°)

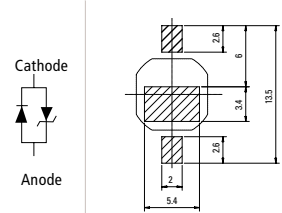


Package Outline

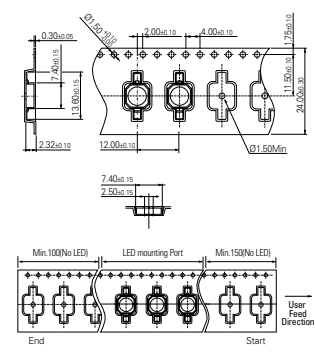


Unit:mm, T_a=25°C

Polarity Recommended Soldering Pattern



Carrier Tape



Absolute Maximum Ratings T_a=25°C

Item	I _F (mA)	T _J (°C)	T _{Stg} (°C)	T _{Sid}	T _{Opr}
Value2	350	125	-40 ~ 110	260°C, 10sec	-40 ~ 85

Electrical Characteristics T_a=25°C

Item	Symbol	Condition	Min.	Typ.	Max.	Unit
Forward Voltage	V _F	350mA	3.0	3.5	4.0	V
Reverse Voltage	V _R	10mA	0.5	-	2.0	

※ Tolerance : V_F ±0.1V

Chromaticity Coordinate T_a=25°C, @350mA

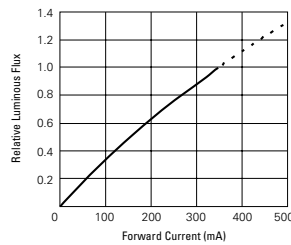
Rank	CCx				CCy				CCT
S0	0.3428	0.3700	0.3863	0.3471	0.3138	0.3322	0.4050	0.3818	4,000~5,000
T0	0.3700	0.4370	0.3863	0.3700	0.3322	0.3551	0.4310	0.4050	3,300~4,000
U0	0.4041	0.4440	0.4880	0.4370	0.3551	0.3700	0.4490	0.4310	2,600~3,300

※ Tolerance: x,y ±0.02

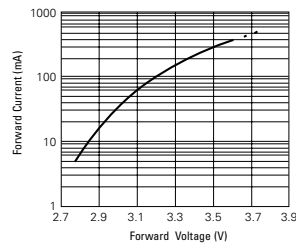
Part Number	Dimension (mm)	Rank	Luminous Flux (lm)			Condition	CRI	Viewing Angle 2θ 1/2(degree)
			Min.	Typ.	Max.			
SLHNNWW511N1	7.0×7.0×2.0t	G1	60	65	70	350mA	80	115°
		H1	70	75	80			
		I1	80	83	90			

※ Tolerance ±10%

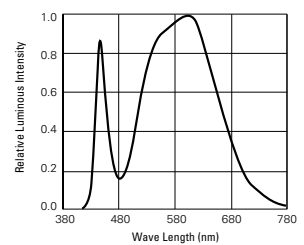
Relative Luminous Flux vs Forward Current



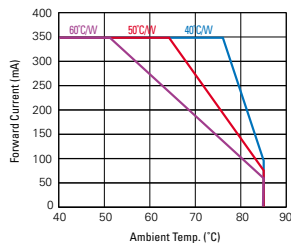
Forward Current vs Forward Voltage



Spectrum Distribution



Derating Curve for 350mA



CIE Coordinate

