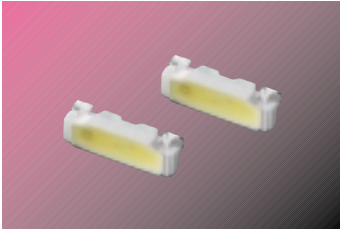
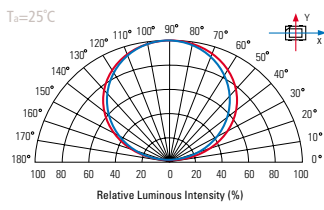


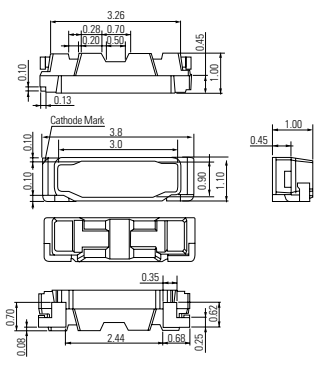
SLSNNWOAT(1.1T)



Radiation Diagram (120°)

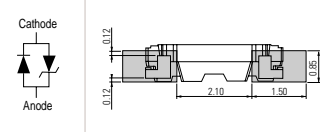


Package Outline

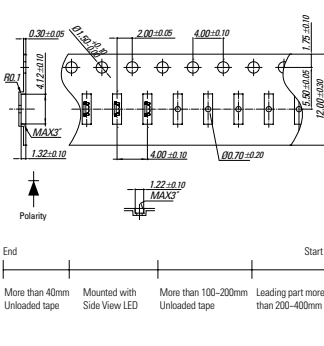


Polarity

Recommended Soldering Pattern



Carrier Tape



Absolute Maximum Ratings Ta=25°C

Item	If (mA)	*Ifp (mA)	Tj (°C)	Tstg (°C)	Tstd	ToPr (°C)
Value2	30	100	120	-40 ~ 100	260°C, 10sec	-30 ~ 85

* Pulse condition : 10% Duty and 0.1ms width

Electrical Characteristics Ta=25°C

Item	Symbol	Condition	Min.	Typ.	Max.	Unit
Forward Voltage	Vf	20mA	3.0	3.2	3.4	V
Reverse Voltage	Vr	10mA	0.6	-	2.0	V

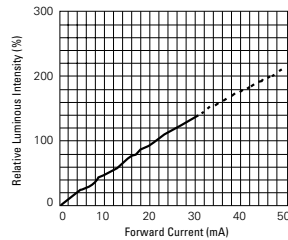
※ Tolerance : Vf ±0.05V

Product List Unit : mm, Ta=25°C

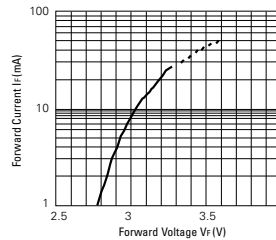
Part Number	Dimension	Rank	Luminous Intensity(mcd)			Condition	Viewing Angle 2θ/2(degree)
			Min.	Typ.	Max.		
SLHNNWOAT	3.8x1.0x1.1t	M1	1700		1750	20mA	120°
		M2	1750		1800		
		N1	1800		1850		
		N2	1850		1900		
		O1	1900		1950		
		O2	1950		2000		
		AF1	2000		2050		
		AF2	2050		2100		
		AG1	2100		2150		
		AG2	2150		2200		
		AH1	2200		2250		
		AH2	2250		2300		
		AI1	2300		2350		
		AI2	2350		2400		
		AJ1	2400		2450		
		AJ2	2450		2500		
		AK1	2500		2550		
		AK2	2550		2600		
AL1	2600		2650				
AL2	2650		2700				

※ Tolerance : ±5%

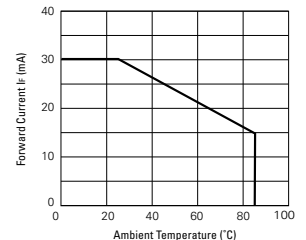
Relative Luminous Intensity vs. Forward Current



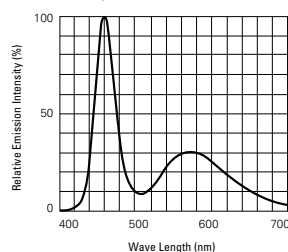
Forward Current vs. Forward Voltage



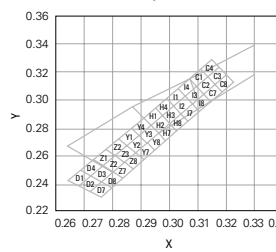
Forward Current Derating Curve



Spectrum Distribution



CIE Coordination(SAMSUNG-LED Rank)



SLSNNW0AT(1.1T)

Chromaticity Coordinate				T _a =25°C, @20mA	
S-LED rank	x	y	S-LED rank	x	y
D2	0.2680	0.2380	D7	0.2720	0.2340
	0.2720	0.2340		0.2760	0.2300
	0.2760	0.2410		0.2797	0.2367
	0.2723	0.2453		0.2761	0.2411
D3	0.2723	0.2453	D8	0.2761	0.2411
	0.2760	0.2410		0.2797	0.2367
	0.2800	0.2480		0.2835	0.2435
	0.2765	0.2525		0.2800	0.2480
Z2	0.2765	0.2525	Z7	0.2800	0.2480
	0.2800	0.2480		0.2835	0.2435
	0.2840	0.2550		0.2872	0.2502
	0.2808	0.2598		0.2841	0.2551
Z3	0.2808	0.2598	Z8	0.2841	0.2551
	0.2840	0.2550		0.2872	0.2502
	0.2880	0.2620		0.2910	0.2570
	0.2850	0.2670		0.2880	0.2620
Y2	0.2850	0.2670	Y7	0.2880	0.2620
	0.2880	0.2620		0.2910	0.2570
	0.2920	0.2690		0.2947	0.2637
	0.2893	0.2743		0.2920	0.2690
Y3	0.2893	0.2743	Y8	0.2920	0.2690
	0.2920	0.2690		0.2947	0.2637
	0.2960	0.2760		0.2985	0.2705
	0.2935	0.2815		0.2960	0.2760
H2	0.2935	0.2815	H7	0.2960	0.2760
	0.2960	0.2760		0.2985	0.2705
	0.3000	0.2830		0.3025	0.2775
	0.2975	0.2885		0.3000	0.2830
H3	0.2975	0.2885	H8	0.3000	0.2830
	0.3000	0.2830		0.3025	0.2775
	0.3040	0.2900		0.3065	0.2845
	0.3015	0.2955		0.3040	0.2900
I2	0.3015	0.2955	I7	0.3040	0.2900
	0.3040	0.2900		0.3065	0.2845
	0.3080	0.2970		0.3105	0.2915
	0.3055	0.3025		0.3080	0.2970
I3	0.3055	0.3025	I8	0.3080	0.2970
	0.3080	0.2970		0.3105	0.2915
	0.3120	0.3040		0.3145	0.2985
	0.3095	0.3095		0.3120	0.3040
C2	0.3095	0.3095	C7	0.3120	0.3040
	0.3120	0.3040		0.3145	0.2985
	0.3160	0.3110		0.3185	0.3055
	0.3135	0.3165		0.3160	0.3110
C3	0.3135	0.3165	C8	0.3160	0.3110
	0.3160	0.3110		0.3185	0.3055
	0.3200	0.3180		0.3225	0.3125
	0.3175	0.3235		0.3200	0.3180

※ Tolerance : x,y ±0.01